



Ed Tobias, Associate Broker
 Cell: 610-823-4655
 ETobias@GoBerksCounty.com

Jeremy Tobias, REALTOR®
 Cell: 610-698-7090
 JTobias@GoBerksCounty.com

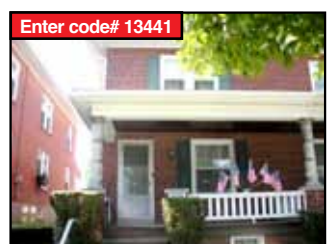
Property Info 24/7 Call: 610-685-2770 & enter code#
Office: 610-670-2770
 Serving Your Real Estate Needs for Over 25 Years

Visit Us Online at www.EdTobiasHomeSales.com



Enter code# 13501

9 E. PENN AVENUE
 Well maintained 2 unit owned by same investor for over 30 yrs. Each unit has 1 BR, a liv. rm & full size kitchen. 1st flr has enclosed rear porch & bsmt access. 2nd flr unit has attic access for extra storage. Oversized 2 car det. garage could be rented separately. An income generating property at a great price in a nice area. Call for details or a priv. showing. MLS# 5959631 \$145,000



Enter code# 13441

338 MADISON STREET, SHILLINGTON
 All brick semi on low traffic tree lined street. 3 private BRs, 1.5BAs. New replacement windows, berber carpeting, updated kitchen w/Corian sink & counters. All appliances remain. Lovely covered front porch, attic w/cedar cabinets & partial finished lower level. Oversized 1 car garage. Home Warranty, \$115,900 MLS# 5946883



Enter code# 15381

136 W. BROAD STREET, SHILLINGTON
 Beautiful turn of the century brick 2 story with wrap-around front porch. Gov. Mifflin Schools. Features: 4 bedrooms, 2 baths & garage. Modern kitchen, 1st floor study and a private office. Over 2,400 sq. ft. of living space. Old world charm w/stained trim, transom and ornate banister. Patio has a privacy fence & roofed hot tub area. One year home warranty. \$189,900 MLS# 5989385



Enter code# 15341

2000 RESERVOIR ROAD, OLEY SCHOOLS
 Custom built hand laid stone home in Oley Valley Schools. Over 2,800 sq. ft. of living space. Features: 4 bedrooms, 2 1/2 baths. Open floor plan with 2 stone fireplaces: (living room & finished family room which has a wet bar). Approx. half acre lot filled with trees and professionally landscaped. Private 1st floor office, 2 car tandem garage. Beautiful grounds and 53' enclosed or covered slate patio. One year home warranty. \$219,900 MLS# 5987938



Info 24/7
Call 610-685-2770
 enter the 5 digit code#

610-670-2770

FORECLOSURES

40 Dover Ct.	\$130,150
6816 Boyertown Pike	\$80,000
15 E Penn Ave	\$29,900
1320 Telegraph Rd	\$87,900
320 Laurel Dr	\$166,900
1481 Catalina Ave	\$73,250

Info 24/7 18221



DANIEL BOONE SCHOOLS!
www.PattyRapposelli.com/5883427

Info 24/7 16291



NEWER MUHLENBERG TWIN!!
www.SharonRohrbach.com/5976451

Info 24/7 16281



FRESHLY PAINTED WITH NEW CARPET!
www.PattyRapposelli.com/5925042

Info 24/7 10061



BRANDYWINE SCHOOLS! OWNERS ANXIOUS!
www.SharonRohrbach.com/5965100

Info 24/7 16261



SINGLE HOME IN EXETER SCHOOLS!
www.PattyRapposelli.com/5961732

Info 24/7 28891



MUHLENBERG SPLIT!
www.SharonRohrbach.com/5900571

Sharon Rohrbach
 direct: 610.603.2658
www.SharonRohrbach.com

Patty Rapposelli
 direct: 610.603.2660
www.PattyRapposelli.com

Call us for a list of our foreclosures!



610-670-2770
Outstanding Agents, Outstanding Results!



Tod Slabik,
 GRI, ABR, CDPE
www.slabik.com



Barry Slabik,
 CRS, GRI, CDPE
TOP 5% OF AGENTS NATIONWIDE

NEW PRICE



SOLD

BLANDON MEADOWS
 4 bedroom 2.5 bath 2 story with over 2000 sq. ft. plus partially finished lower level. Large rear deck & view, no rear neighbors. \$148,000 MLS# 5972502



IMPERIAL DRIVE
 Large contemporary with 4 beds & 2 1/2 baths. Home has wooded views with privacy sitting on a 2+ acre lot. Immediate occupancy. MLS# 5782789 \$295,000

FORECLOSURES

- Pottstown Rowhome \$27,900
- Frackville Single \$34,900
- Womelsdorf Trailer - 1 Acre \$54,900
- 533 Elm St. 2 Unit \$54,900
- Blandon Single \$54,900
- Baresville Single \$64,900
- Pine Grove 3 Unit \$69,900
- 436 W. 1st Birdsboro \$69,900
- Deer Lake 2 Story \$103,000
- Boyertown Single \$124,900
- Wilson Lot 4.58 Acres \$149,900
- 1510 Hill Rd \$159,900
- Blandon Mez **SOLD** Sty \$148,000
- 1034 Imperial Ave. \$295,000
- Oley 2-story \$364,900

NEW LISTING



MILLMONT TWIN
 Brick 3 bedroom twin with easy access to major roads & possible off st. parking in rear. There are front & rear porches, gas FP in liv. rm., & needs a good amount of work. Call Tod MLS# 5996023 \$59,000



STATELY BRICK 2 STORY -
 Originally part of original Luden Complex. Home offers updated kitchen. Lots of hardwood, 3 BRs, 2 full & 2 half BAs. \$159,900 MLS# 5717984

INVESTOR LISTINGS

- 536 Birch Street \$16,500
- 418 Green Terrace 5 Unit & 3 Garage \$59,000
- Approx 3/4 Ac Muhlenberg Lot w/River View. \$98,500
- Albright Area 2 Unit \$124,900



Joanne Baggott
 CDPE - GRI - CRS REALTOR® Broker
www.JoanneBaggott.com
 Phone: 610-914-2875



Grace Korbler
 Email: g.korbler@berkscounty.com
www.GraceKorbler.com
 Phone: 610-636-2907

Info 24/7 Call- 610-685-2770 and enter 5 digit code # on each property

BUSINESS



#10311
 MOBILE FOOD STAND
www.JoanneBaggott.com/5951911

Muhlenberg Schools



#29291
 BIG REAR DECK
www.GraceKorbler.com/5907913



#11141
 LARGE KITCHEN
www.JoanneBaggott.com/5937089

Reading School District



#20281
 CIL-DE-SAC
www.JoanneBaggott.com/5951911



#14831
 MOVE-IN READY
www.JoanneBaggott.com/5919291



#30451
 7 UNITS
www.GraceKorbler.com/5965235

Wilson Schools



#14671
 2-CAR GARAGE
www.JoanneBaggott.com/57467

Pottsville Schls



#29671
 1ST FLOOR LAUNDRY
www.GraceKorbler.com/5924420

Conrad Weber District



#10311
 BEAUTIFUL RUST KITCHEN
www.JoanneBaggott.com/5775451

Govem or Mifflin Schools



#13891
 CUTE RANCHER
www.JoanneBaggott.com/5918983